

Philosophy of Care

The philosophy and delivery of health and human services has changed dramatically in recent years with a greater focus on recovery and person centered services. The concept of institutionalized care has evolved to community based care and programs designed to allow individuals with mental illness to receive the support necessary to live independent and productive lives within the community.

Intensive Case Management (ICM) is a service designed to fulfill this philosophy by providing flexible and critical services that decrease hospital admission, incarceration, and homelessness by expanding an individual's social supports and access to community based resources.

Core Values

- ◆ Person-centered care
- ◆ Individual Empowerment
- ◆ Passion for innovation and integrity
- ◆ Recovery-focused services
- ◆ Evidenced-based treatments
- ◆ Focus on community and natural supports
- ◆ Resiliency



To schedule an appointment or to make a referral, call

The Access Center

(770) 422-0202

The Access Center of the Cobb and Douglas County Community Services Boards connects the residents of Cobb, Douglas, and surrounding counties to appropriate behavioral health services. The Access Center operates 5 days a week, from 7AM to 5PM and is the first step to receiving services for mental health, substance use disorders, and developmental disabilities.

RECOVERY STARTS HERE.

If you are in need of immediate assistance please contact the Georgia Crisis and Access Line (GCAL)
1-800-715-4225



Cobb and Douglas Community Services Boards

Provider of Mental Health, Addictive Disease, and Developmental Disability Services

Recovery is Possible!

ICM

Intensive
Case
Management



Strengthening supports to sustain a quality life in the community.

Intensive Case Management (ICM)
6133 Love Street
Austell, Georgia 30168
Phone: (678) 777-3534
Fax: (770) 438-5136

www.cobbcsb.com

*Strengthening supports to
sustain a quality life in
the community.*

Referral Information

The link to our online referral form is located under Mental Health Services on our website:

www.cobbcsb.com

Once the referral is received, an ICM staff member will contact you with additional information.

You may contact the 24/7 ICM Information Line for additional assistance.

(678) 777-3534

Intensive Case Management (ICM)

Services

ICM Case Managers form a therapeutic relationship with the individuals served, with an emphasis on using the person's individual strengths to empower them to fully participate in all treatment decisions, thus promoting illness self management and recovery.

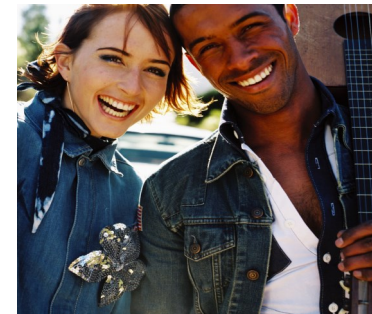
ICM provides *frequent, intensive, and flexible* services, which:

- ◆ Empower achievement of person-centered goals
- ◆ Monitor and reduce risk factors
- ◆ Provide resource coordination
- ◆ Educate for symptom/health management
- ◆ Enhance skills allowing individuals to live an improved quality of life

Service Eligibility

Individuals with severe, persistent mental illness, an ability to navigate traditional mental health services (with assistance), and one or more of the following:

- ◆ Recent and/or frequent psychiatric hospitalizations
- ◆ Chronic homelessness
- ◆ Frequent ER visits for mental illness
- ◆ Recent jail/prison releases



Intensive Case Management (ICM)
at
Cobb and Douglas
Community Services Boards
Believe **RECOVERY IS POSSIBLE!**

